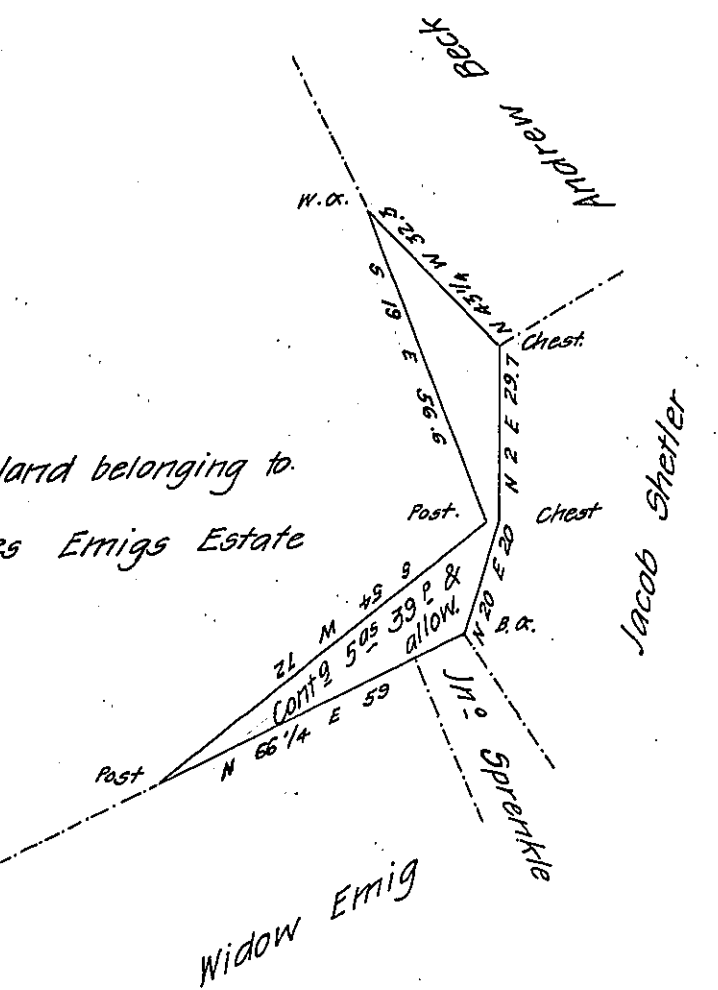


Other land belonging to
Charles Emig Estate



Situate in Codorus township in the County of York Containing as above
 set forth 5^{as} 39 perches and the usual Allowance &c^a Surveyed on the 21st day of
 May A.D. 1828 in pursuance of a Warrant for 4^{as} granted to Jacob Spangler Esq^r
 adm^{or} of the Estate of Charles Emig deceased in trust for the use of the heirs
 & Representatives of said deceased, bearing date the 19th day of May A.D. 1828.

Dan^l Small D.S.

To Gabriel Hiester Esqr.

Surveyor General.

IN TESTIMONY that the above is a copy of the original remaining on file in
 the Department of Internal Affairs of Pennsylvania, made
 conformably to an Act of Assembly approved the 16th day of
 February, 1833, I have hereunto set my Hand and caused
 the Seal of said Department to be affixed at Harrisburg,
 this twenty fourth day of April 1908

Henry Hoover
 Secretary of Internal Affairs.